



Hope is Strong Ministries Event Planning Guide:

1. Choose a date and time for your event.

2. Determine the length of your event:

Event with Host:

Note: This will depend on your location and requires a minimum donation of \$150 that will go directly to Hope is Strong Ministries.

30 minutes: Ministry share time only

- Consists of a quick overview of geography, culture, and language

45 minutes: Ministry share time w/audience participation

- Includes the 30 minutes above with additional interactive game, learn some Swahili and time for questions.

60 minutes: Ministry share time w/audience participation and activity.

- Includes the 45 minutes above with ministry activities.
- Current Ministry Activity: Evangelism Bracelets (see Wordless Bracelet Supplies)

Event led by you and your team:

Do some research on the Hope is Strong Ministries website: www.hopeisstrong.com so you can familiarize yourself with the most recent developments in our ministry.

Find some YouTube videos here:

<https://www.youtube.com/playlist?list=PLb0A1CfkJbjoB9ly7O6lc6O-1BDPqzPa1>

Remember why you got involved with Hope is Strong Ministries in the first place. What is it about Hope is Strong Ministries and its programs that inspire you? That could potentially inspire your guests?

Activity Options:

Color Tanzanian Map

Color Tanzanian Flag

About Me Pages

Current Ministry Activity: Evangelism Bracelets (see Wordless Bracelet Supplies)

3. Let us know!

Let us know a month to three weeks ahead of your event. If you would like a host to come lead your event, we will let you know our availability as soon as possible. If you are leading your event, we will send you a planning packet with some prayer cards to share with your group and a sample of the current ministry activity. We would love to be praying for you and your upcoming event.



4. Set a Fundraising Goal

Fundraising on behalf of something you believe in is always easier if you have a goal in mind. Think about how many people are coming and set a realistic goal of how much money you would like to raise at this event.

5. Event Time!

Set a timed agenda for the event – allow time for any transitions of groups and/or activities. Be sure to prepare the activities ahead of time; make and copies needed and set up any supplies for the ministry activity.

We would love to hear how it went and/or see some of your event pictures. Feel free to follow us on social media and tag us:

<https://www.facebook.com/hopeisstrongministries>

https://www.instagram.com/hope_isstrong/

We pray this event will be a special time of ministry for you and your group. It's amazing what doors God can and will open.

Feel free to reach out to me (817) 219-8394 if you have any questions.

Blessings,
Becky Willyard
Exec. Dir. and Founder, Hope is Strong Ministries.

ALL

ABOUT ME

Favorite Bible
Verse/Bible Story

Name: _____

Age: _____

Birthday: _____

Favorites

Food: _____

Color: _____

Animal: _____

Game: _____

Season: _____

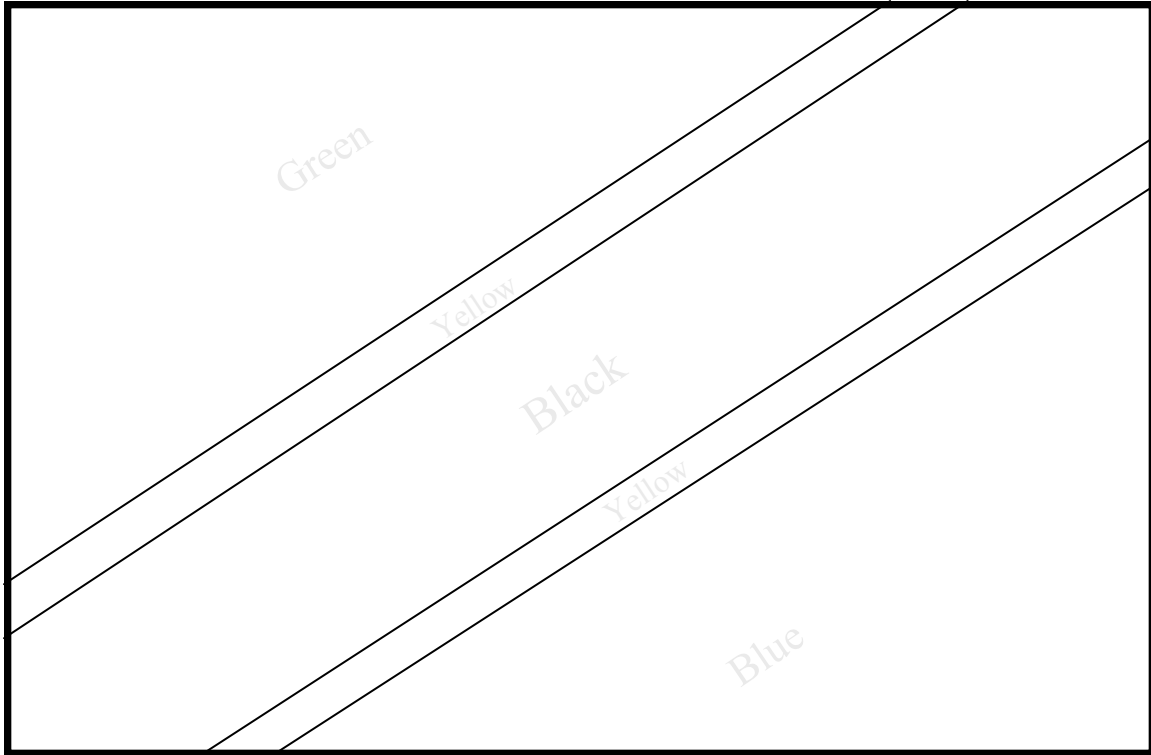
My Family

Africa



This is a royalty free image that can be used for your personal, corporate or education projects. It can not be resold or freely distributed, if you need an editable PowerPoint or Adobe Illustrator version of this map please visit www.bjdesign.com or www.mapsfordesign.com. This text can be cropped off. © Copyright Bruce Jones Design Inc. 2011

The Flag of Tanzania

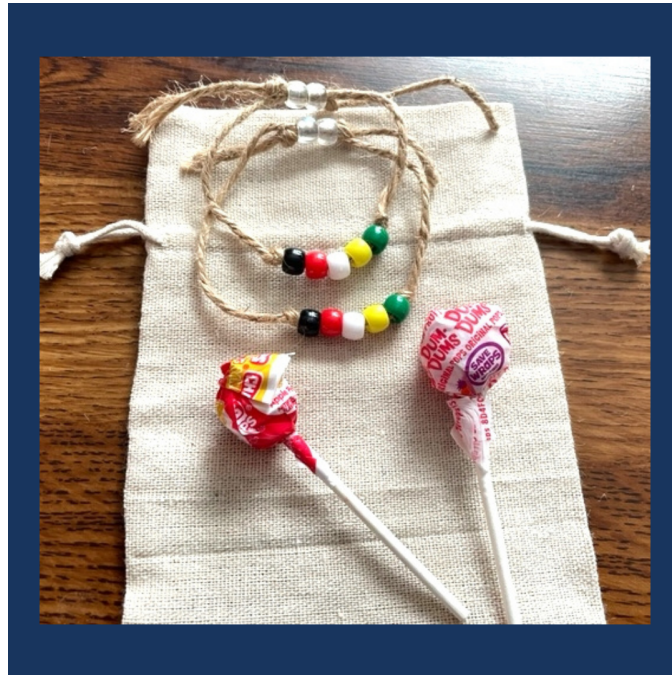


The flag of Tanzania was officially adopted on June 30, 1964. It consists of four different colors: green, yellow, black and blue. The flag has five diagonal stripes and is based on the flags from the countries of Zanzibar and Tanganyika.

The colors of the flag represent the following:

- ~ Green {top left corner}: the agriculture and the fertility of the land
- ~ Blue {bottom right corner}: the color of the Indian Ocean, which is Tanzania's eastern coastline
- ~ Black {middle stripe}: the land and the people of Tanzania
- ~ Yellow {above and below the black stripe}: the country's rich mineral wealth

Wordless Bracelets



This is a simple and fun craft for kids or youth. It's a great way to involve them in the Great Commission.

We have a goal to take at least 600 wordless bracelet kits, like the one above on our next mission trip to Tanzania. We currently have a ministry in Dar Es Salaam Tanzania hoping to receive 200 of them as well.

Each color of the Wordless Bracelet represents an important Bible truth about Salvation!

BLACK	Sin	Romans 3:23	All have sinned
RED	Blood	1 John 1:7	Jesus' blood covers all sin
WHITE	Pure	Psalm 51:7	Jesus washes away confessed sin
YELLOW	Heaven	John 14:2	Believe on Jesus and receive Eternal Life
GREEN	Grow	2 Peter 3:18	Grow in the knowledge of the Lord

We will be passing them out to children and youth after sharing the meaning and the Gospel message. We will challenge them to share the same message with a family member or friend. That is where the candy comes in, giving them a way to start the conversation.

Please know that your help is a blessing to us. We pray that through this craft you are also able to share the Gospel message with your group and that several will make the decision to follow Christ. [Here are some other resources you may find helpful:](https://www.abcjesuslovesme.com/ideas/wordless-book)
<https://www.abcjesuslovesme.com/ideas/wordless-book>

Materials



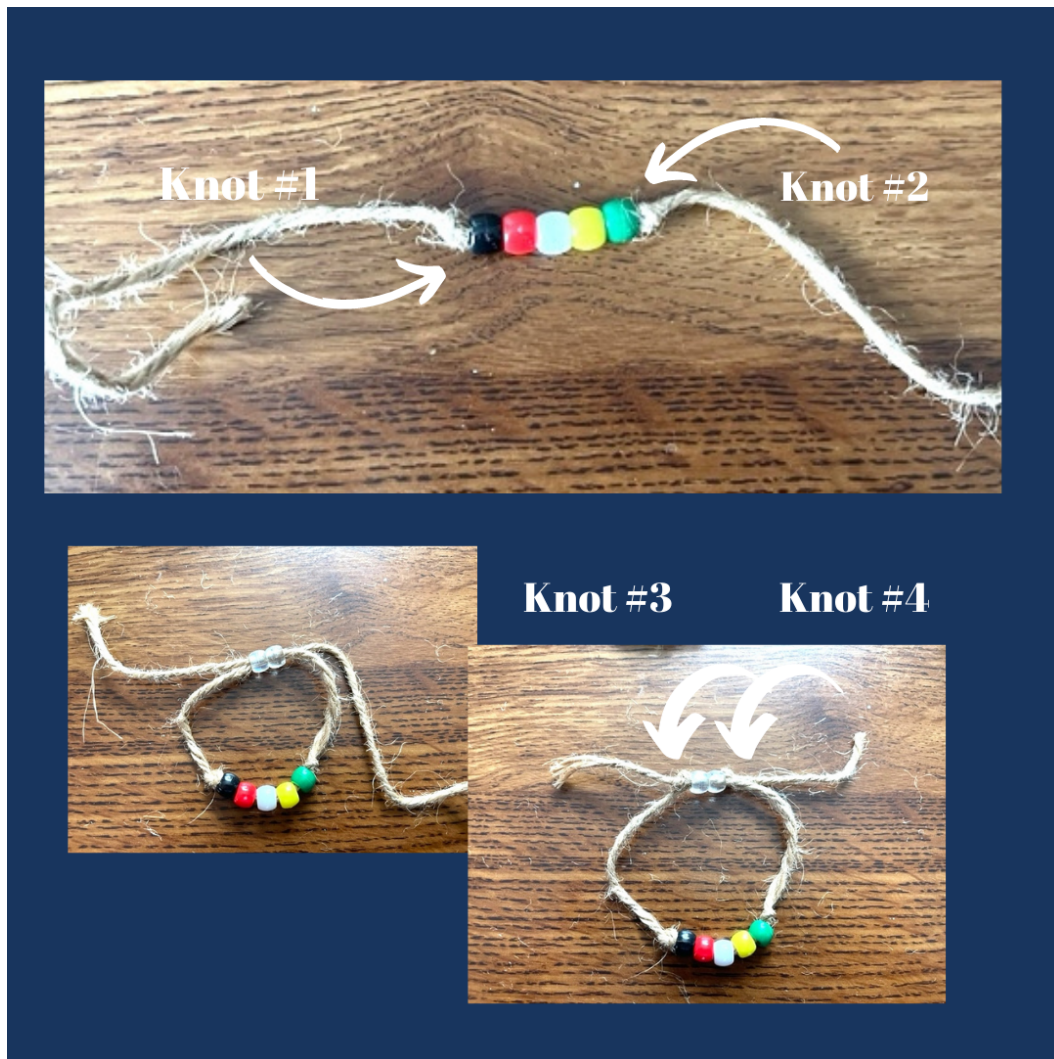
One Kit - Materials

Gather the following supplies:

- 1) Round Pony Beads 2 each
 - Black
 - Red
 - White
 - Yellow
 - Green
- 2) Round Pony Beads 4 each
 - Clear
- 3) Heavy duty Jute Cord 3mm thick, or you can use 13-15" black or brown suede leather lace.
- 4) Small drawstring pouch - the one in the picture is 4.5in x 6.5in
(any small drawstring bag will work)
- 5) Two small suckers

**Any of these can be found in basic crafts - Walmart, Hobby Lobby or [Amazon](https://www.amazon.com).*

Instructions



1. Cut two pieces of jute cord approx 16 inches each (giving room for tying and clipping off frayed ends as needed.) *Tip: Apply clear nail polish to the ends to reduce fraying.*
2. Tie knot #1 on lace.
3. Thread beads onto the lace in specific color order (black, red, white, yellow and green).
4. Tie knot #2 on lace.
5. Thread the two clear or blue beads on one end of the lace. Thread the other end of the lace through the two beads.
6. Tie knot #3 and #4 on lace

Prepare Sets

Place 2 bracelets and 2 suckers in one drawstring bag.

Have your group pray over them.



If you are local, in the Johnson County, Tarrant County Texas area please feel free to contact Becky at 817-219-8394 and she will make arrangements to pick up your kits.

Otherwise, please ship them to the follow address:

Hope is Strong Ministries, Inc.
P.O. Box 1594
Joshua, TX 76058

Feel free to contact us at info@hopeisstrong.com if you have any questions.